

McDantim

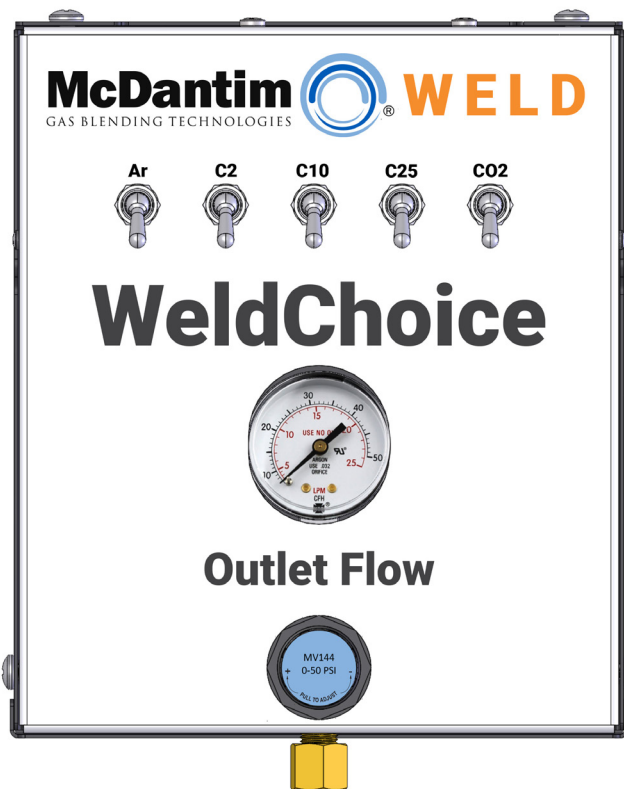
GAS BLENDING TECHNOLOGIES



WELD | DRAUGHT | FRESH

Trumix® WeldChoice

2 Pure Gas - 3 Blend Model



PRESSURIZED GAS WARNING: All work on any pressurized gas systems should be carried out by qualified personnel only. Please read through this manual before attempting any work on this system. Serious injury or death can result from improper installation, use, or service. Dangers include, but are not limited to, EXPLOSION if the maximum safe pressures for any of the individual components of the system are exceeded, or ASPHYXIATION if gases are released or leaked into a confined area.

INSTALLATION & MOUNTING INSTRUCTIONS:

Before you begin:

- Use only gases shown on the inlet labels.
 - Make sure you are supplying the panel with clean, dry gases.
1. Using included Titan Straps, mount WeldChoice to your preferred pure gas cylinder, CO2 or Argon, ensuring the straps are tight.
 2. Install the preset primary regulators onto the primary gas cylinders, making sure all connections are tight.
 3. Install the braided stainless steel lines on to the primary regulators (1/4" NPT) using teflon tape or thread sealant. Then, connect the stainless steel lines to the WeldChoice panel (JIC fittings) making sure neither line is kinked.
 4. Make sure all switches are in the off (down) positions.
 5. Connect the gas line from the welder to the flow regulated outlet (1/4" NPT).
 6. Open up the main cylinder valves to flow gas to the WeldChoice panel.

OPERATION INSTRUCTIONS:

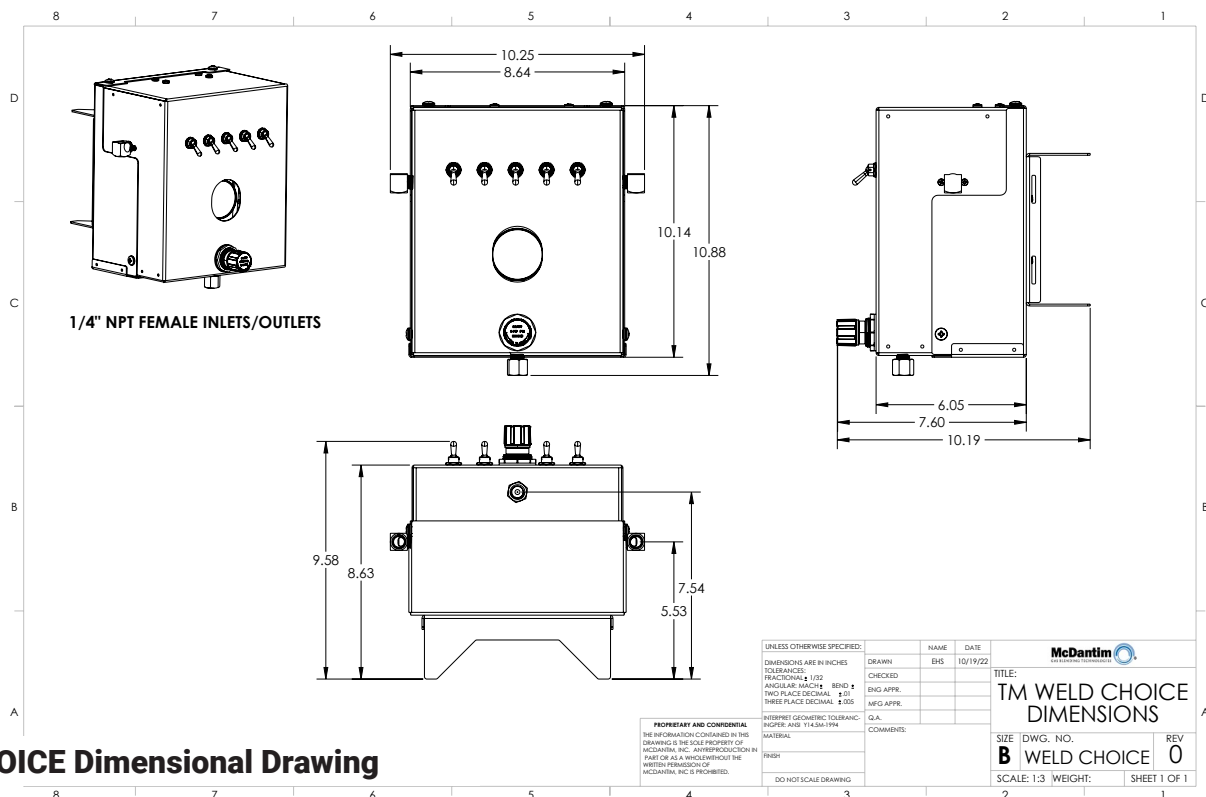
1. Once all connections are tight and secure, turn on a pure or mixed gas of your choice by flipping a switch to the on or upright position.

DO NOT ENGAGE MORE THAN ONE SWITCH AT A TIME

2. To adjust the outlet flow, unlock the regulator bonnet by pulling the knob outward and turning clockwise, or to the right, to adjust.
3. Quick-purging between switching blends can be necessary to clear the line to the welder to avoid any process issues.

MAINTENANCE:

The WeldChoice panel comes preset with CO2 & Argon blends, exceeding AWS standards A5.32 (ISO 14175), depending on blends selected. These cannot be field-adjusted; any adjustments required or requested will need to be processed through McDantim's RMA program. The internal filters should be checked and replaced as needed, varying on use and gas supply. Our recommendation is a minimum of once every 12 months. Please contact McDantim at 888-735-5607 with questions about the RMA program or for replacement parts.



WELDCHOICE Dimensional Drawing

