

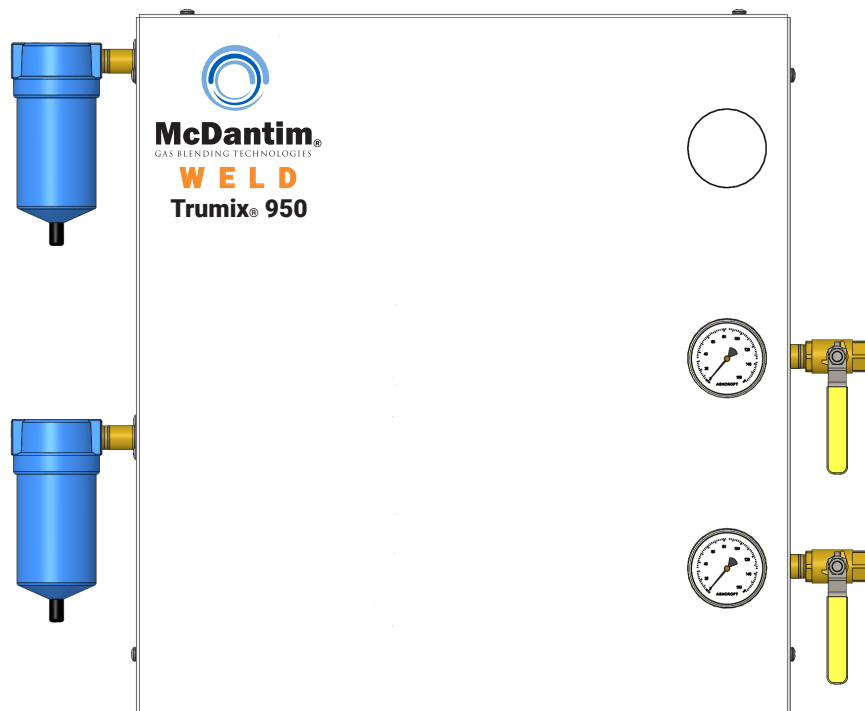
# McDantim

GAS BLENDING TECHNOLOGIES



**WELD** | **DRAUGHT** | **FRESH**

## Trumix® TM2B950 2 Gas Input - 2 Blend Output Model



**PRESSURIZED GAS WARNING:** All work on any pressurized gas systems should be carried out by qualified personnel only. Please read through this manual before attempting any work on this system. Serious injury or death can result from improper installation, use, or service. Dangers include, but are not limited to, **EXPLOSION** if the maximum safe pressures for any of the individual components of the system are exceeded, or **ASPHYXIATION** if gases are released or leaked into a confined area.

# PLEASE NOTE:

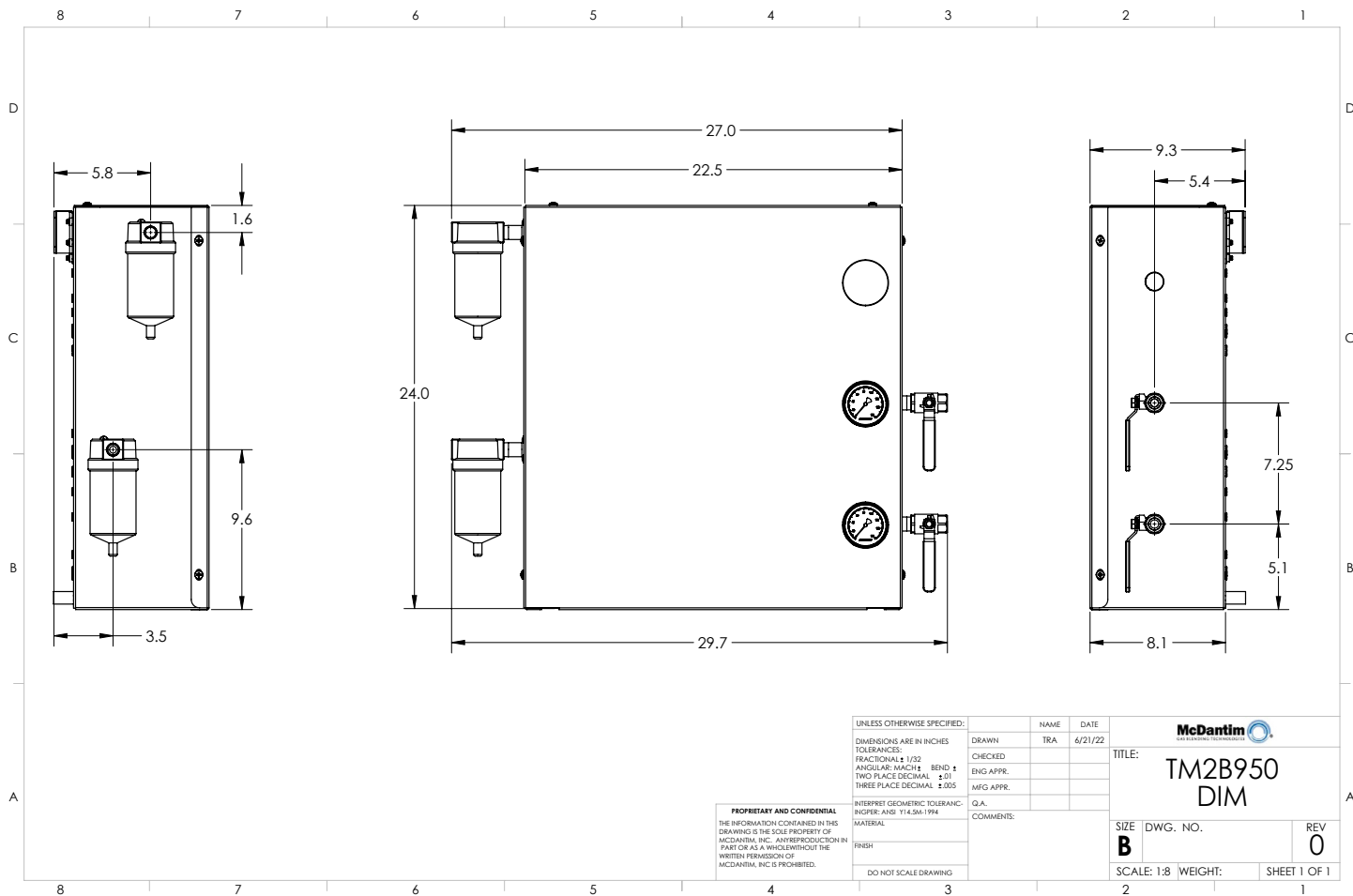
For multiple-blend industrial units, please reference the blend labels (and AWS designation labels, if applicable) while setting up the gas system to ensure correct mixed gas plumbing. The installed filter elements must be replaced every 12 months, but could vary depending on flow usage.

**DO NOT EXCEED MAXIMUM INLET PRESSURE NOTED ON THE INLET LABELS** - failure to follow this can result in safety issues, including explosion or asphyxiation, or equipment issues that void the warranty.

## Replacement Parts:

MV080: Coalescing Filter Elements for MV053 & MV078 (NO O2)

### TM3B950 Dimensional Drawing



## **INSTALLATION & MOUNTING INSTRUCTIONS:**

1. Determine the best location for the panel, considering the following:
  - Minimize the chance of accidental damage to the panel
  - Proximity to supply sources and equipment
  - Convenient access to shut off valves for servicing
2. Weather-proof area mounting only preferred
3. Remove the cover by unscrewing six 1/4-20 x 1/2 Pan Head Phillips Screws (Two on each side and two on top)
4. Remove three 1/4-20 x 1/2 Pan Head Phillips Screws holding the mounting bracket to the panel.
5. Mount the bracket to (two) 16" center to center wall studs, using (four) 1/4 x 2 lag screws (not supplied), or equivalent. Use mounting bolts of a sufficient style and strength, depending on your wall's construction, to hold a minimum of 90 lbs.
6. Hang the Panel on the bracket and secure it with the (three) 1/4-20 x 1/2 Pan Head Phillips screws removed during step 4.

## **INITIAL START-UP OPERATION INSTRUCTIONS**

1. Hook up gas supply and outlet
  - Use only gases shown on the inlet labels.
  - Make sure you are supplying the panel with clean, dry gases that are between the minimum and maximum pressures indicated on the panel labeling.
  - Turn shut-off valve(s) to the OFF position.
  - Ensure the tubing from the gas sources is compatible with the fittings on the panel.

### **DO NOT ATTEMPT TO REMOVE INLET OR OUTLET FITTINGS.**

- Install appropriate tubing adaptors into the outlet fittings. Be sure to use thread sealant and back-up wrenches. Connect gas supply lines to the inlet fittings.
- Confirm that your system and related equipment is safe and ready for pressurized mixed gas.
- Connect the mixed gas supply line(s) to the mixed gas outlet fitting(s).
- Turn on the supply gases and check the supply system for leaks.
- Adjust the outlet pressure regulator(s) to the desired outlet pressure verifying with the outlet pressure gauge(s).
- Open mixed gas supply shut off valve and check the system for leaks.